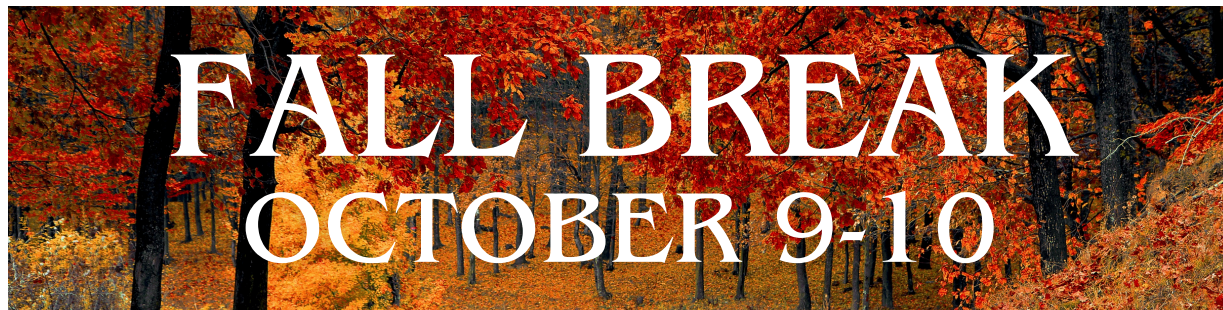


Early Settlement Mediation

SOUTHEAST PROGRAM



IN THIS ISSUE:

**NEW OFFICE
COORDINATOR IN
MCALESTER**

PROGRAM NEWS

**VOLUNTEER
SPOTLIGHT**

JUDGES CORNER

BIRTHDAYS

**CASE LOAD & JUDGES
SUMMARY**

NEW OFFICE COORDINATOR ROGER JONES

by Regan Clinton, Program Director

Roger Jones has been hired as Early Settlement Southeast's part-time Office Coordinator in McAlester.

Roger's position will cover Haskell, Latimer, LeFlore, McIntosh, and Pittsburg Counties.

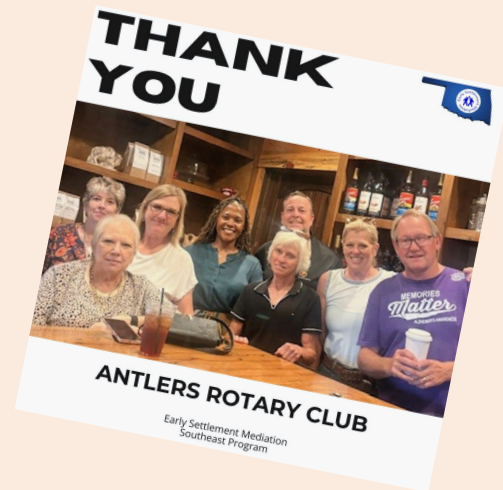
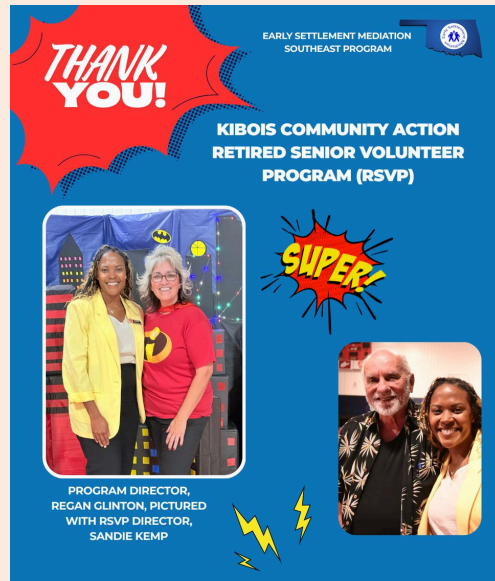
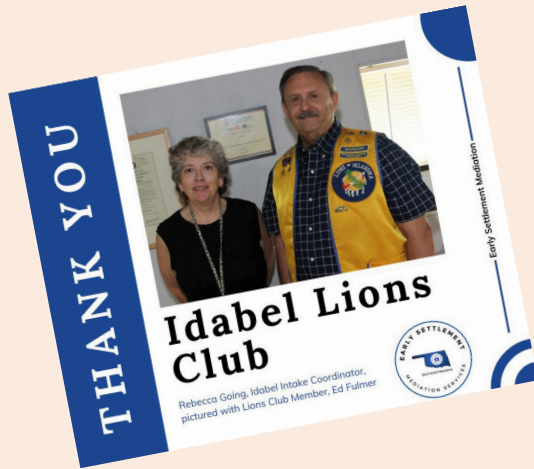
Welcome to the team, Roger!



PROGRAM NEWS

Welcome to our program newsletter! We are thrilled to share with you the latest efforts to make a positive impact in our community.

Southeast Intake Coordinator, Rebecca Going, and Regan Glinton, Program Director, visited with both the Idabel Lions Club and Antlers Rotary Club to talk about Early Settlement Mediation services and volunteer opportunities!



VOLUNTEER SPOTLIGHT

This month's volunteer is Dan Bridgwater.

Dan has been a volunteer with Early Settlement Mediation for two years.

"I find the service we provide very rewarding and helpful to the judges and the legal system. I have always been interested in the law and the workings of the legal system and since I never went to law school find this to be a fulfilling way to be involved".



(PICTURED ABOVE IS NICOLE CORDER, DAN BRIDGWATER, AND JUDGE BRIAN MCLAUGHLIN)

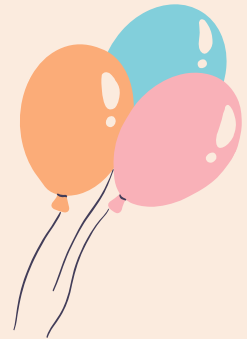


JUDGES CORNER: Honorable Judge Mindy Beare



"I appreciate all the volunteers that give up their time to try to help people find a resolution of their cases. It is always better for families if they can reach an agreement on how to manage issues facing their family, rather than having a stranger make those decisions. While volunteers interaction with the court may be limited, their time and service is noted and appreciated".

October Birthdays!



SAVE THE DATE:

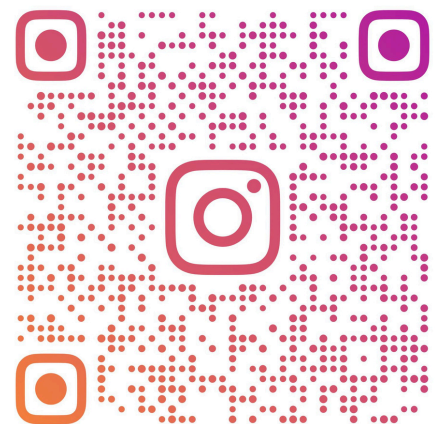
- October 9-10: Fall Break (Offices Closed)
- November 6: Hybrid Basic Training
- November 17: Volunteer Luncheon



**FOLLOW
US ON
SOCIAL
MEDIA!**



 **@ESSEMEDICATION**



ESSOUTHEAST

 **@ESSOUTHEAST**

COUNTY SUMMARY

JULY 2025-SEPTEMBER 2025

EARLY SETTLEMENT MEDIATION County Statistical Monthly Report

Program **SOUTHEAST**Month/Year **2026 SUMMARY**

(Enter the number of mediations REFERRED from each county)

County	Basic	Family	Adult Guardianship	IDEA	Child Permanency	Other	TOTAL CASES
Choctaw	16	3	0	0	0	0	19
Hask ell	0	0	0	0	0	0	0
Lat im er	1	0	0	0	0	0	1
LeFlore	7	0	0	0	0	0	7
McCurtain	2	2	0	0	0	0	4
McIntosh	0	2	0	0	0	0	2
Pittsburg	26	8	0	0	1	0	35
Pushmataha	3	1	0	0	0	0	4
TOTAL	55	16	0	0	1	0	72

(Enter the number of mediations HELD in each county)

County	Basic	Family	Adult Guardianship	IDEA	Child Permanency	Other	TOTAL CASES
Choctaw	16	2	0	0	0	0	18
Hask ell	0	0	0	0	0	0	0
Lat im er	0	0	0	0	0	0	0
LeFlore	7	0	0	0	0	0	7
McCurtain	2	1	0	0	0	0	3
McIntosh	0	2	0	0	0	0	2
Pittsburg	26	8	0	0	1	0	35
Pushmataha	3	1	0	0	0	0	4
TOTAL	54	14	0	0	1	0	69

JUDGES SUMMARY ON
NEXT PAGE...

JUDGES SUMMARY

JULY 2025-SEPTEMBER 2025

(Enter the number of mediations REFERRED by each Judge)

JUDGE	BASIC	FAMILY	CHILD PERMANENCY
BAZE	16	4	
BEARE	0	6	1
BRIDGES	0	2	1
HOGAN	1	1	
MAXWELL	0	0	
MCLAUGHLIN	31	0	
MILLS	0	1	
NICHOLSON	1	0	
RAGLAND	0	1	
TUCKER	3	1	
SULLIVAN	0	0	
UPTEGROVE	2	0	
TOTAL	55	16	2